



Municipal Annexation Plan

City of Floresville



Topics

- Why Annex?
- How to Annex? The Legal Basis
- Where to Annex? Multiple Criteria
- Discussion/Questions



Why Annex?

- City provides services directly
 - Water
 - Sewer
 - Street Maintenance
 - Police Protection
 - Fire Protection
- City provides services indirectly
 - Police Protection
 - Fire Protection
 - Land Use controls and other regulations not covered by County government



How to Annex? The Legal Basis

- Chapter 43 of Texas Local Government Code
- Voluntary (By Petition)
- Involuntary (By Municipal Annexation Plan – MAP, Subchapter C)
- Involuntary (By Exception, 43.052(h))
- Non-Annexation Development Agreements

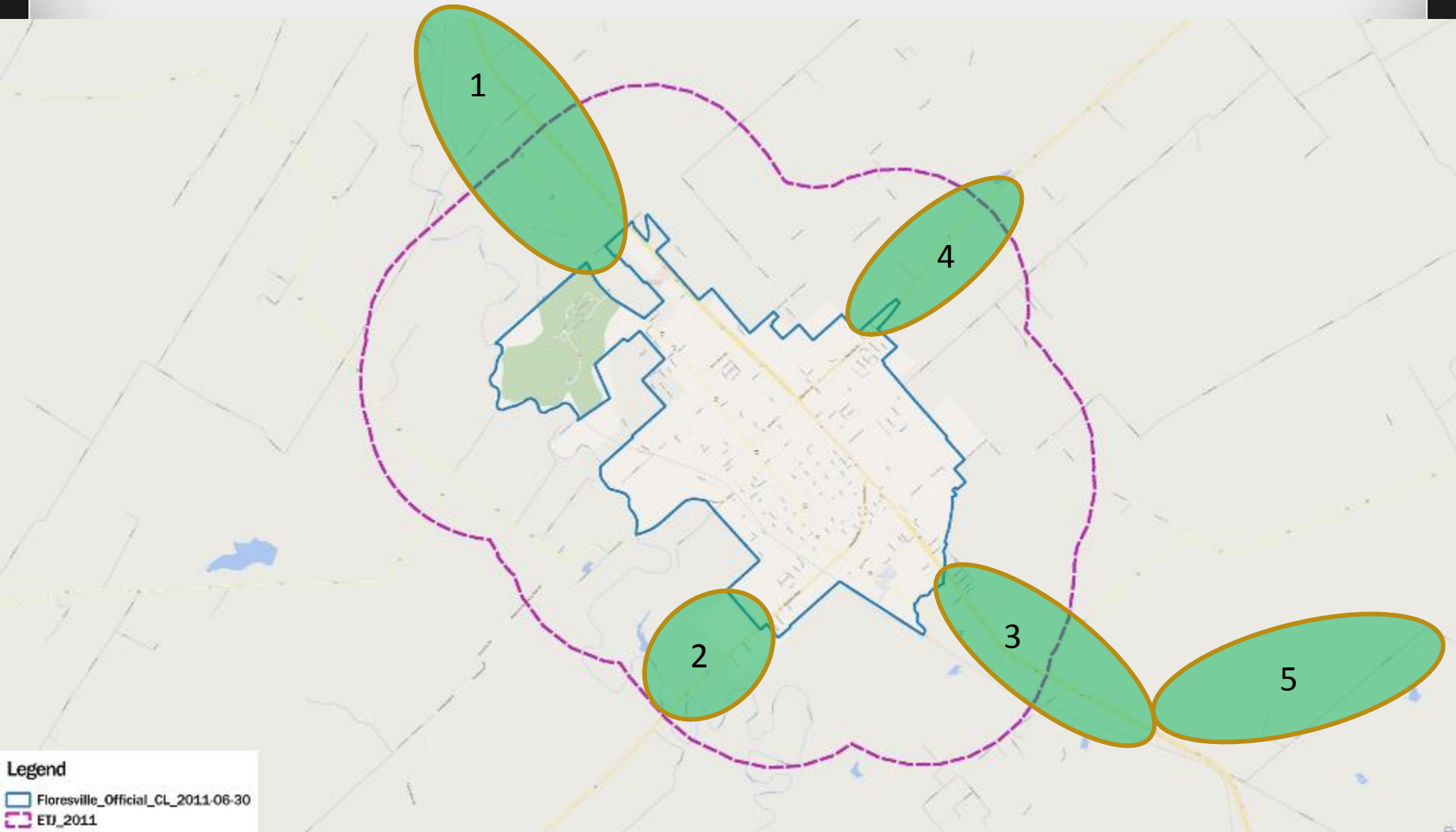


Where to Annex: Multiple Criteria

- Consistent with/Implementing the Future Land Use Plan
 - Areas of Strategic Importance: Gateways, Intersections, Emerging Tax Base, Neighboring City ETJs
 - Areas most likely to be served by Water/Sewer (CCN)
- Contiguous to the Current City Limits
 - Or Contiguous via NDA
- Areas Best Served by Floresville PD
- Other Areas Agreed to with Wilson County
- 10% per year (max 30% if not done in prior years)
- Minimum 1,000 ft in width



Future Land Use Plan Priority Areas

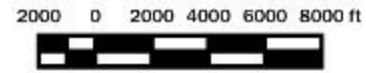


Legend

- Floresville_Official_CL_2011-06-30
- ETJ_2011

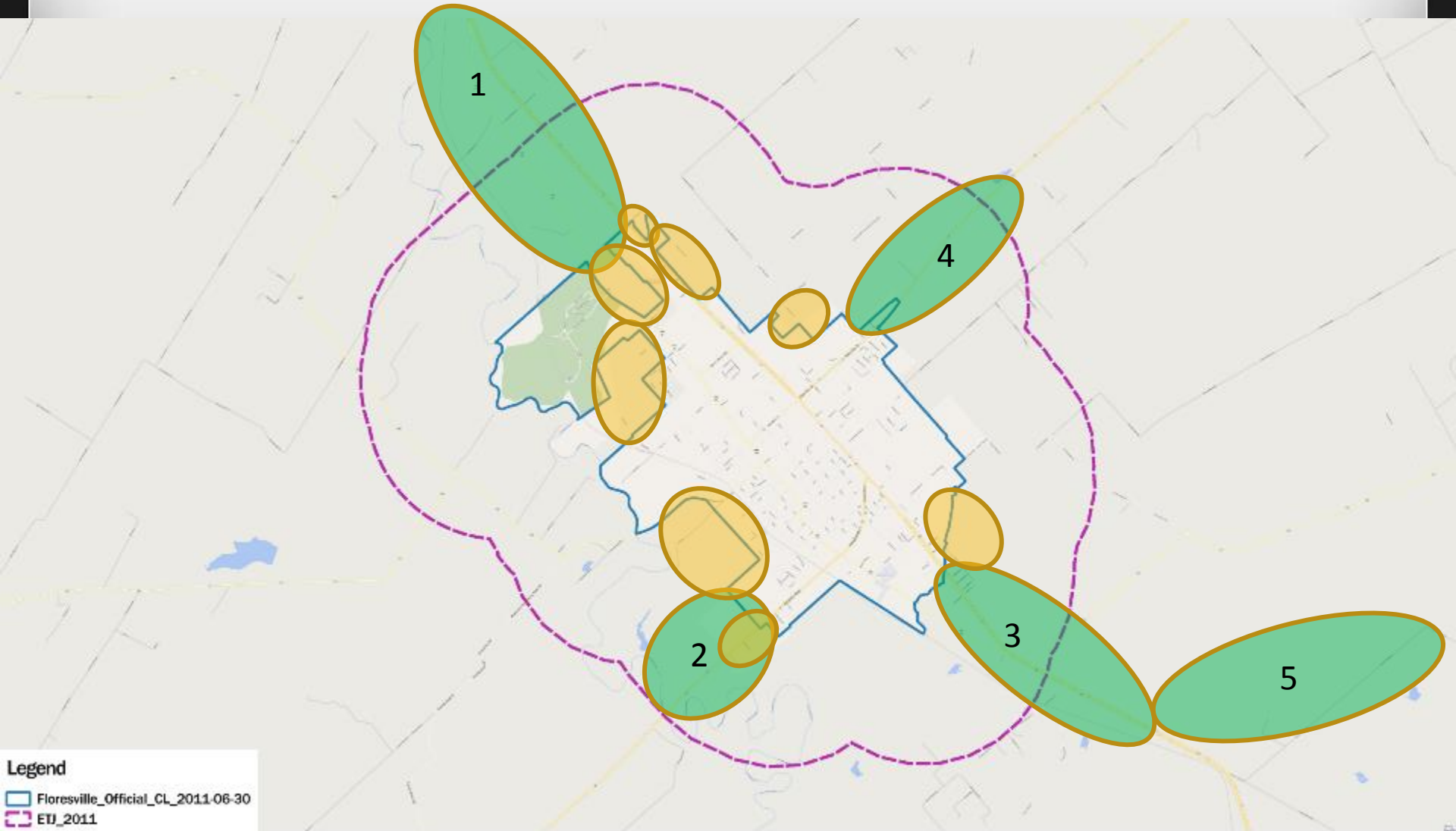


City of Floresville, Texas
Annexation Strategy





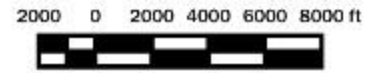
FLUP/City & County Priority Areas



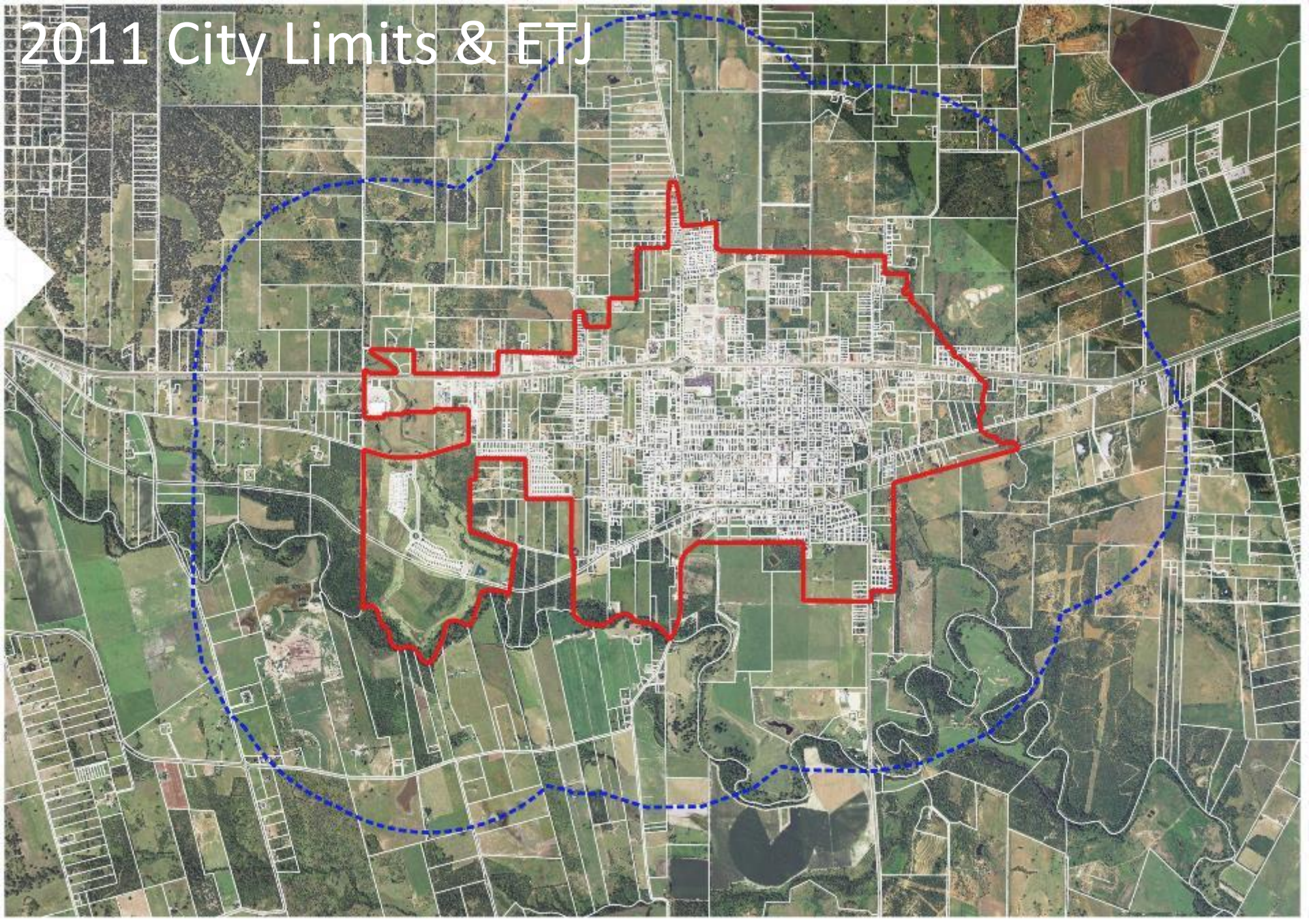
Legend
Floresville_Official_CL_2011-06-30
ETJ_2011



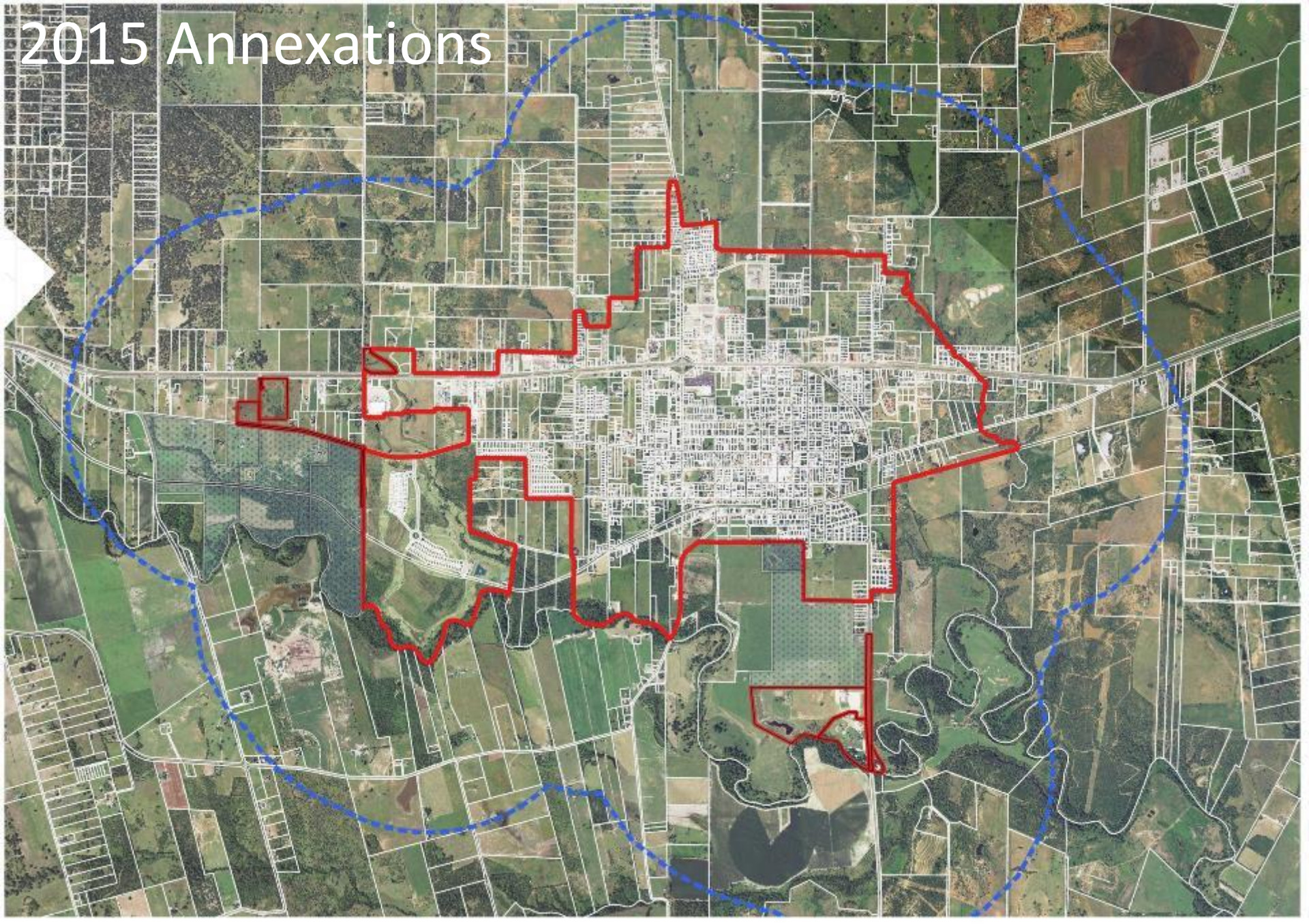
City of Floresville, Texas
Annexation Strategy



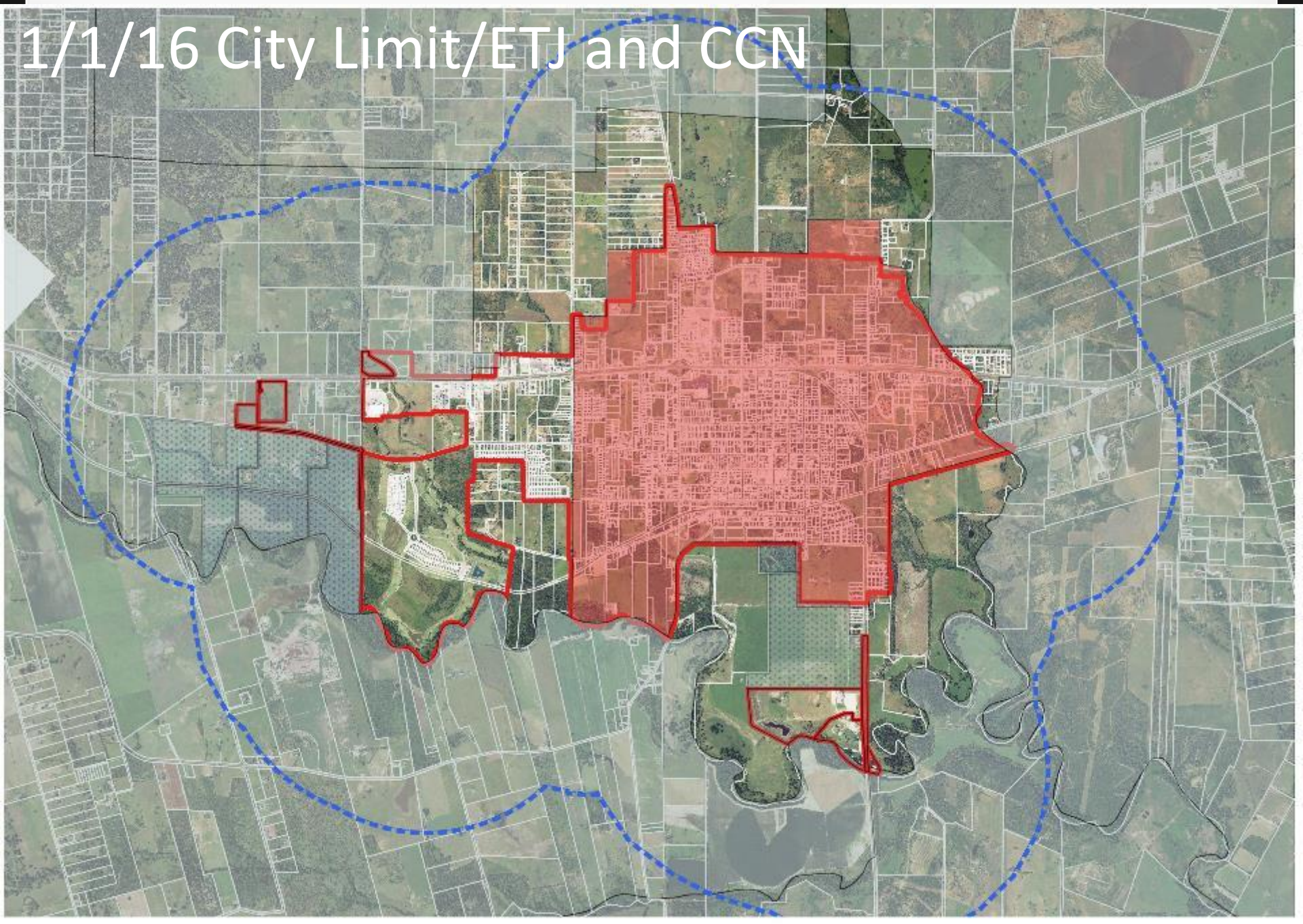
2011 City Limits & ETJ



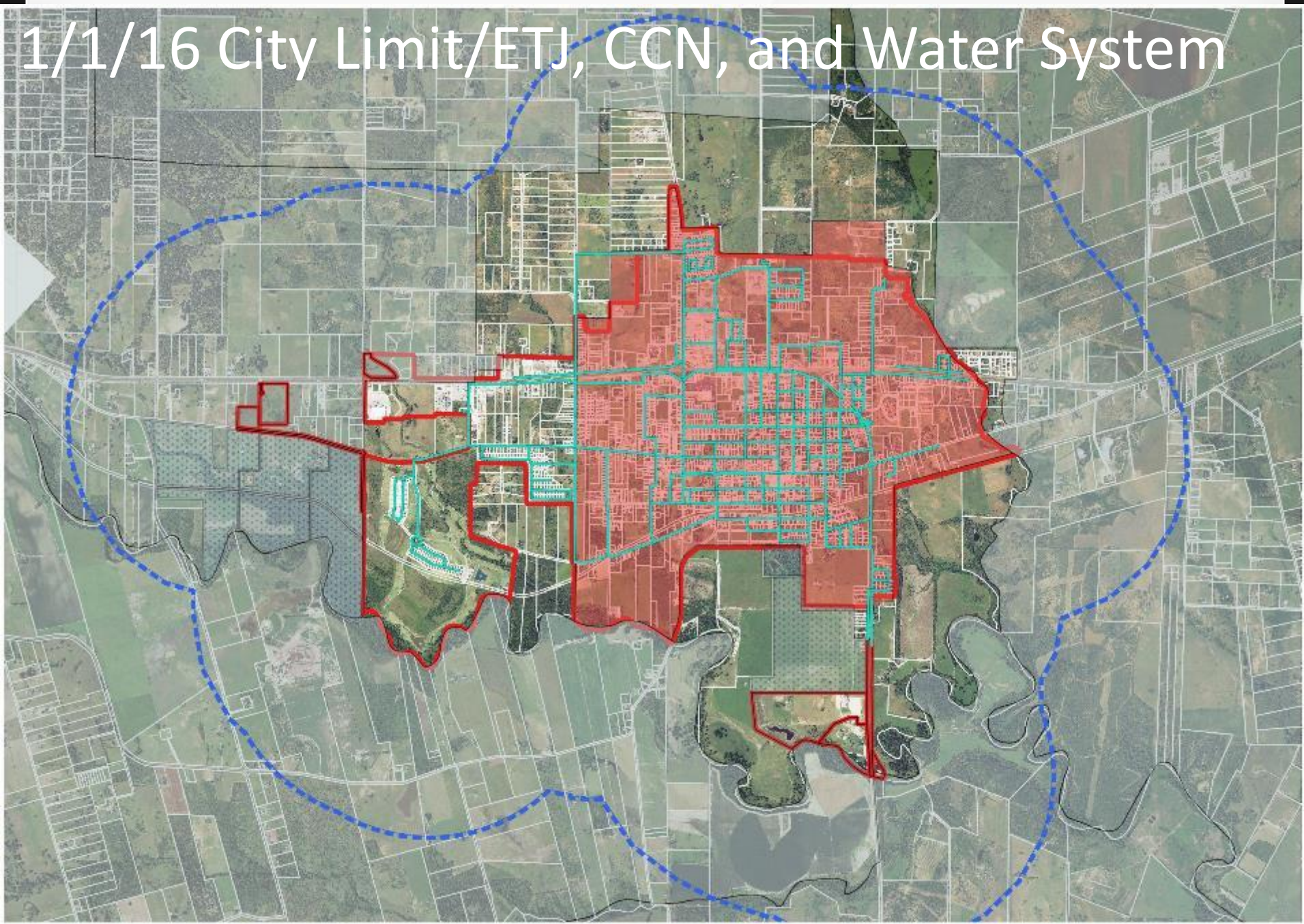
2015 Annexations



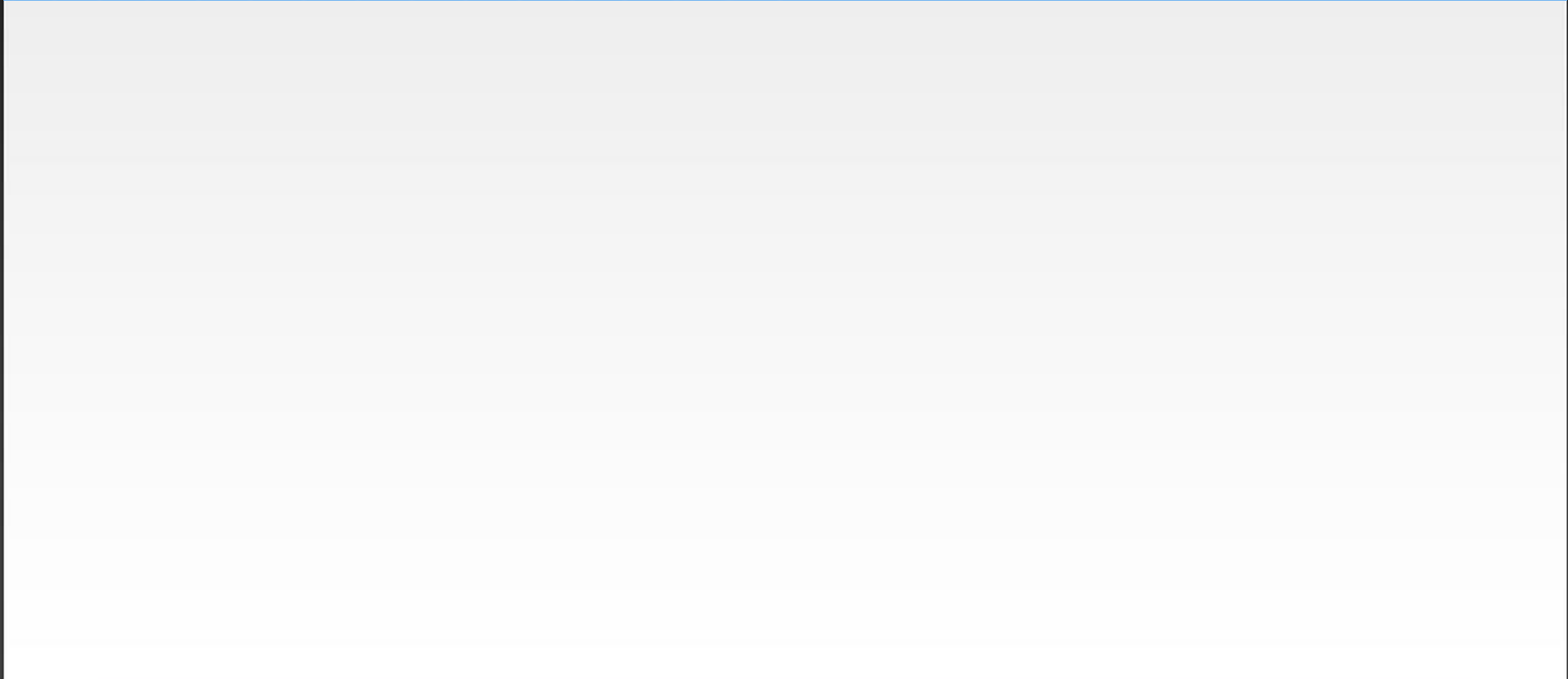
1/1/16 City Limit/ETJ and CCN



1/1/16 City Limit/ETJ, CCN, and Water System



2019 under a Municipal Annexation Plan





2016 Municipal Annexation Plan

- Adopt in 2016, Annexations happen in 2019.
- Consultant to verify areas are not >10% per year
- Can be phased (e.g. 2019, 2020, 2021)
- P&Z Recommendation
- Council & County Workshop
- Council Action
- Follow Steps Outlined in TLGC §43
- Review Annually, Amend MAP and FLUP as necessary
- Most Likely a Mix of Voluntary, MAP, and NDAs



Discussion/Questions

Chris Stewart

chris@stewartplanning.com

512-450-2051